



Concept Lighting Document

# DIANTHUS RESIDENCE, HOUGHTON, STOCKBRIDGE

Document Reference: 744-(100)-CD-DR

Revision: -

Date: 16.10.18

[michaelgrubbstudio.com](http://michaelgrubbstudio.com)

[info@michaelgrubbstudio.com](mailto:info@michaelgrubbstudio.com)

+44 1202 511 005

# Contents

## 1.0 Introduction

### 1.1 Overarching Lighting principles

## 2.0 Exterior Lighting

### 2.1 Exterior Facade Precedents

### 2.2 Exterior Entrance Precedents

### 2.3 Exterior Landscape Precedents

### 2.4 Exterior Seating Area Precedents

## 3.0 Interior - Basement Lighting

### 3.1 Family Room Precedents

### 3.2 Bedroom Precedents

## 4.0 Interior - Ground Floor Lighting

### 4.1 Stair & Hall Precedents

### 4.2 Hall Pendant Precedents

### 4.3 Kitchen Precedents

### 4.4 Dining Precedents

### 4.5 Living Room Precedents

### 4.6 Bedroom Precedents

### 4.7 Bathroom Precedents

## 5.0 Interior - First Floor Lighting

### 5.1 Master Bedroom Precedents

### 5.2 Ensuite Precedents

### 5.3 Walk-In Wardrobe Precedents

### 5.4 Study Precedents



# Introduction

In October 2018 Michael Grubb Studio were appointed to provide the Lighting Designs for the Dianthus Residence project, including All Interior and Exterior areas of the property.

The purpose of this document is to gain an understanding of client requirements, needs and wants, through the presentation of initial Lighting Precedent Images for review and comment.



Exterior &  
Facades

(Warm White Lighting 2500K-2700K)

+



Architectural  
& Amenity

(Warm-Neutral White Light 2700K-3000K)

+



Decorative  
& Feature

(Very Warm White Light, 180000-2500K)



# Overarching Lighting Principles

## Colour Temperature

Colour temperature describes the coolness or warmth of light. The lower the number in degrees Kelvin (K), the warmer the appearance of the light. For example, 1800K light has a warm appearance, similar to candlelight, while 5000K light is cold.

Across the Residence colour temperatures will vary from 1800k-3000K. Colour temperatures will be integrated according to the application and purpose of use. 2700K-3000K will be used in Architectural and Amenity lighting applications. Exterior Lighting will range from 2500-2700K. Decorative Lighting will range from 1800K-2500K.

## CRI

All Interior and Exterior Architectural and Amenity Lighting is to be of above CRI90. This will provide each illuminated surface or item with the optimum level of visual impact and will ensure all colours and tones are rendered correctly.

## Beam Angles

A range of beam angles are to be used to ensure all areas of the Residence and items are lit appropriately. Special attention should be paid to guarantee the correct Luminaires and Beam Angles are installed as designed, to achieve the desired and optimum lit result.

## Glare Control

All efforts should be made to minimise Glare. Attention should be paid where Light Spill or Glare could have a detrimental effect on Interior and Exterior Spaces.

Lighting will be carefully focused once installed, lockable luminaires will be used where possible, to ensure that they are not accidentally refocused during servicing and maintenance.

Provision should be made for Louvers, Cowls, Snoots, and other accessories that control Light Spill and reduce Glare to avoid unsightly views.

## Luminaires & Lamp Sources

Consideration must be given to the types of lighting equipment selected as well as mounting locations, materials, the longevity of finishes and the types of light sources utilised.

Lighting equipment should be as discreet as possible unless decorative. Where possible all lighting equipment will be hidden from view, where this is not possible, all lighting will be detailed in such a way that it complements its immediate environment.

This Lighting scheme will utilise long life, efficient LED light sources and Drivers to minimise long term

maintenance and energy costs. In all cases the aim is to provide suitable lighting, ensure ease of adaptation, limit excessive contrast and avoid potential problems of Over-lighting and Glare.

## Dimming Capabilities & Protocol

All luminaires are to be controlled via DALI Protocol Drivers and Lighting Control Systems. All luminaires must dim smoothly to 0%, and must be capable of static illumination below 50 Lux.

DALI Dimmable Drivers are to be use throughout the Museum, to ensure Flicker is avoided. All luminaires must be tested for compatibility with the proposed DALI Dimmable Drivers to ensure smooth dimming and no Flicker is created.

## Way-Finding

Lighting to Interior Spaces, Exterior Architectural & Landscape features will enable people to form a 'Mental Map' of the Residence, and inform the way in which they move, experience and remember it.



# Exterior Lighting



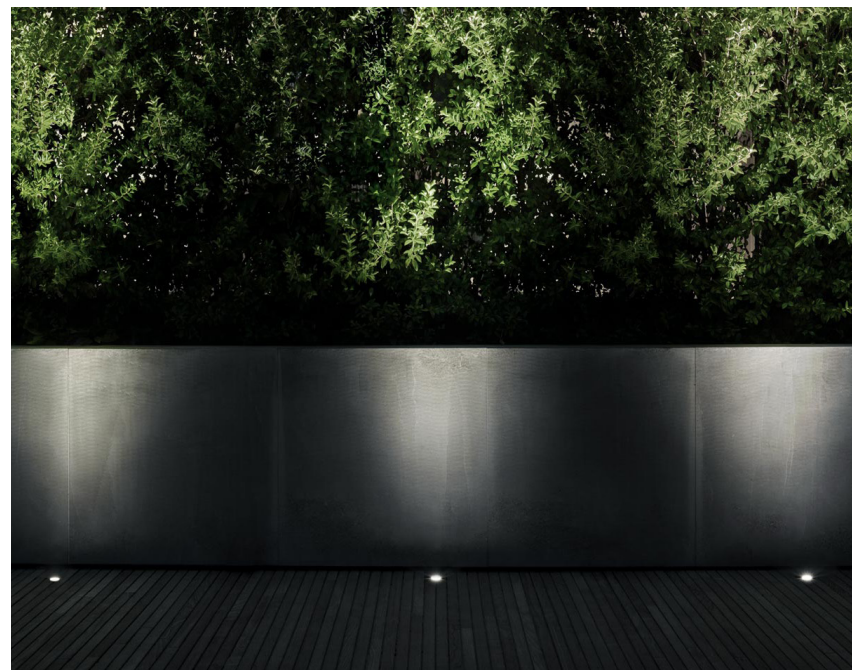
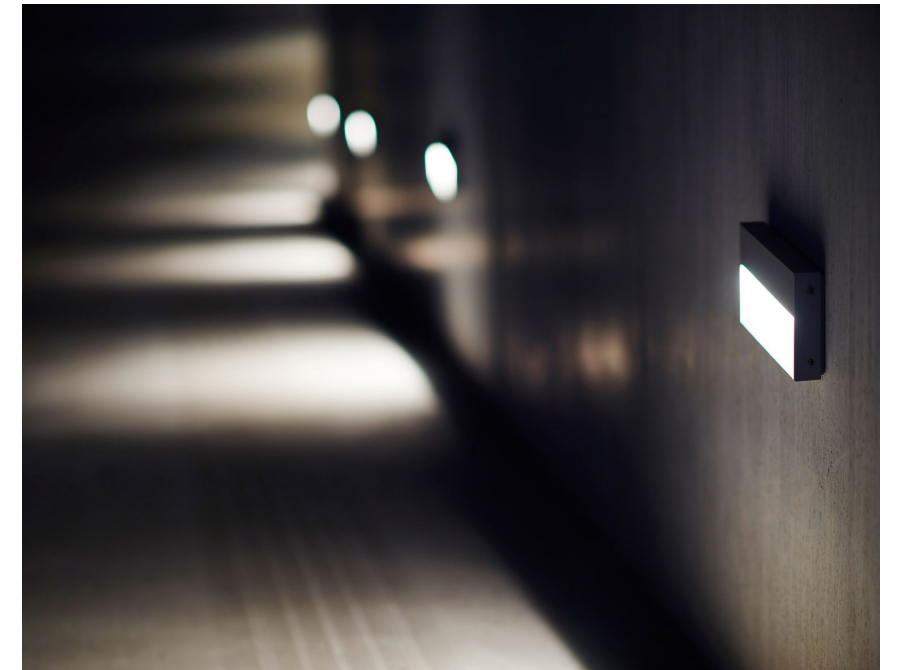


# Facade Precedents



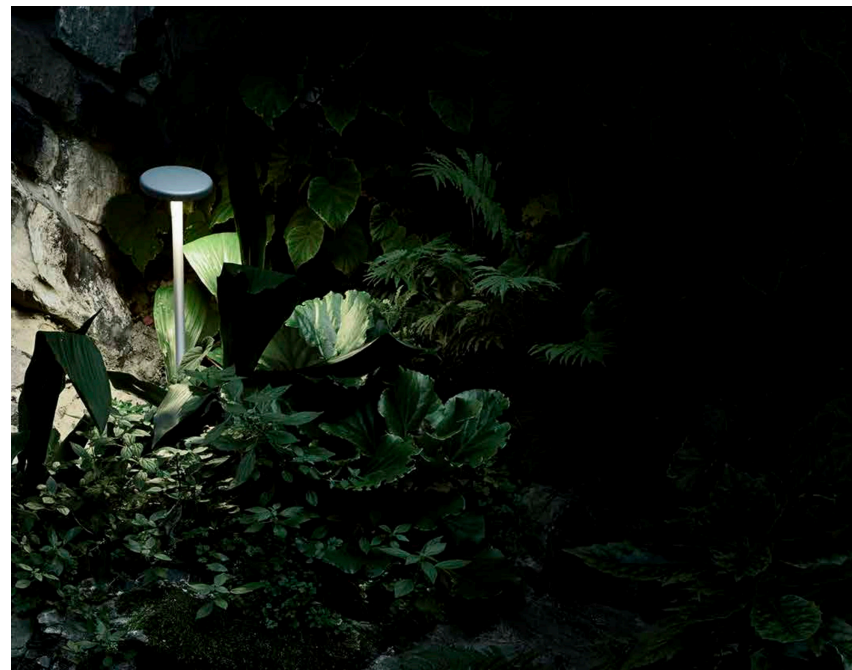
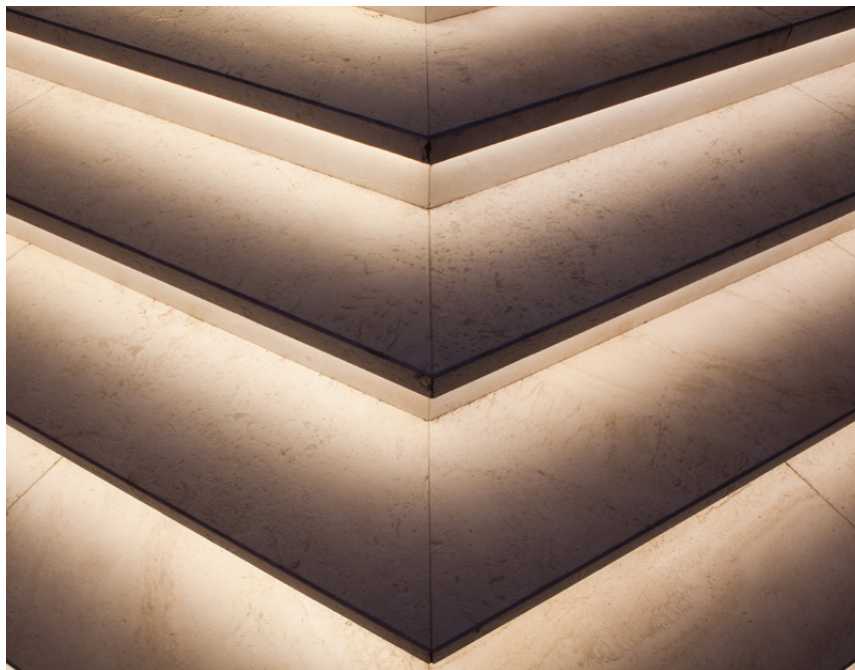


# Entrance Precedents





# Landscape Precedents



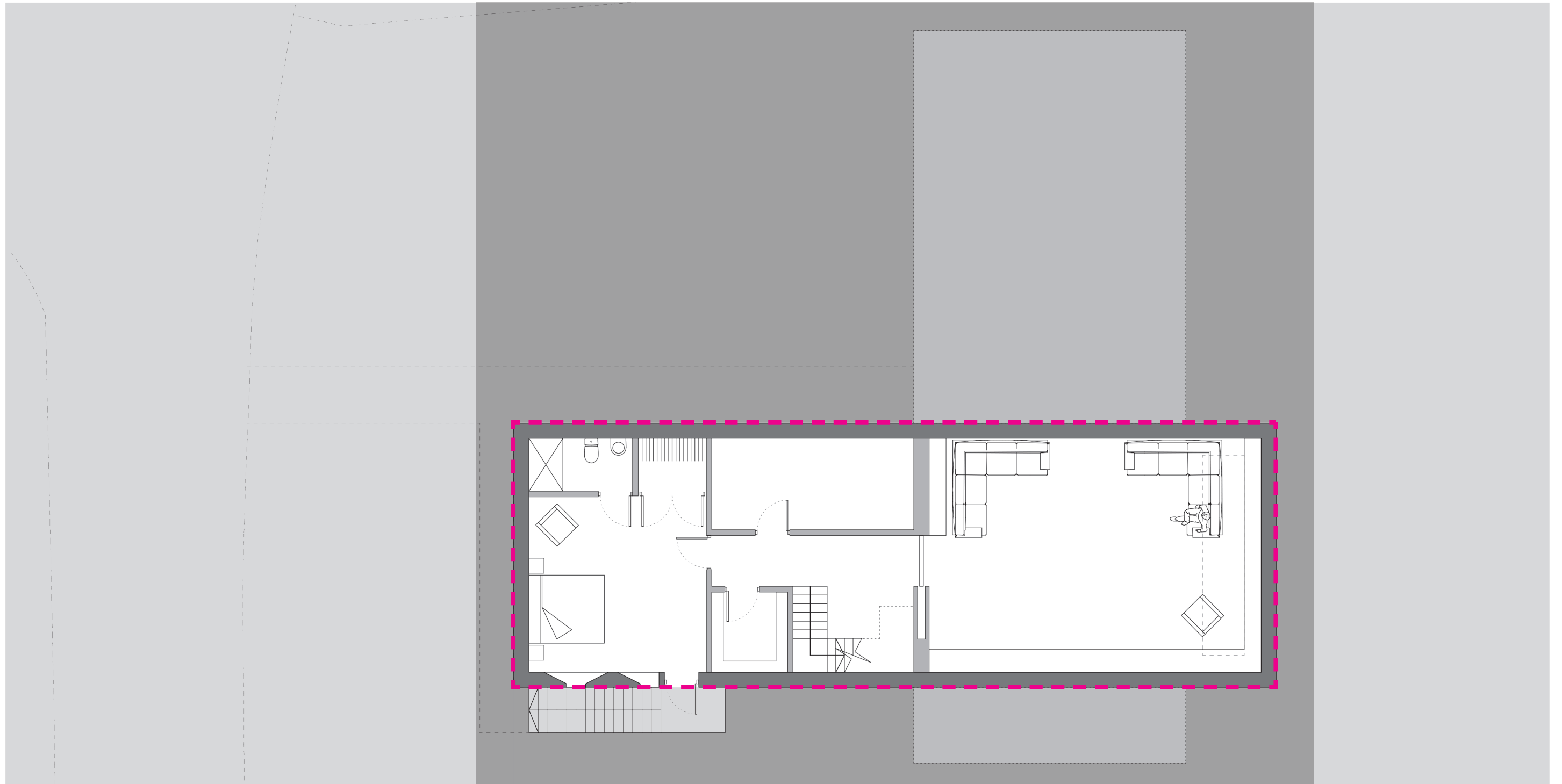


# Exterior Seating Area Precedents



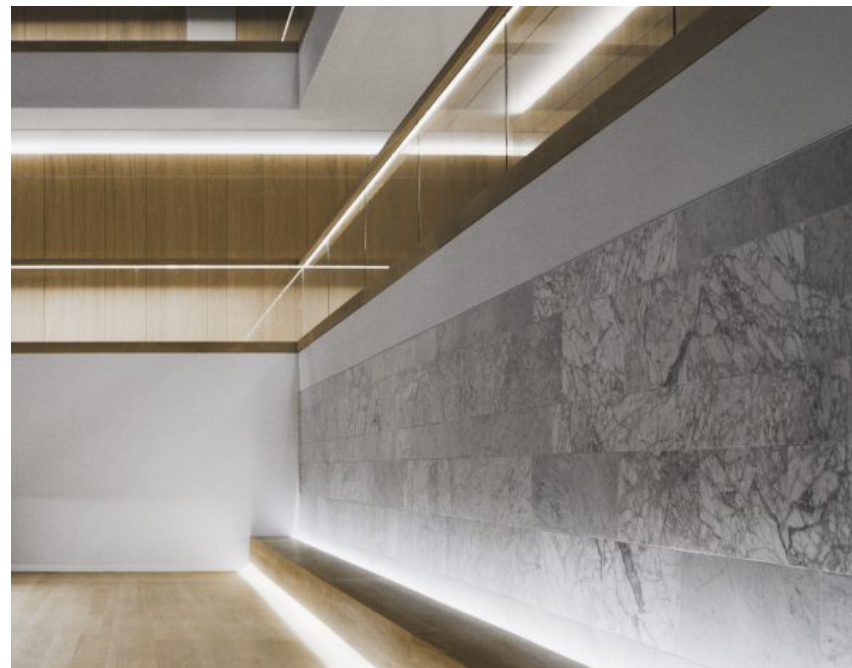


# Interior - Basement Lighting





# Family Room Precedents

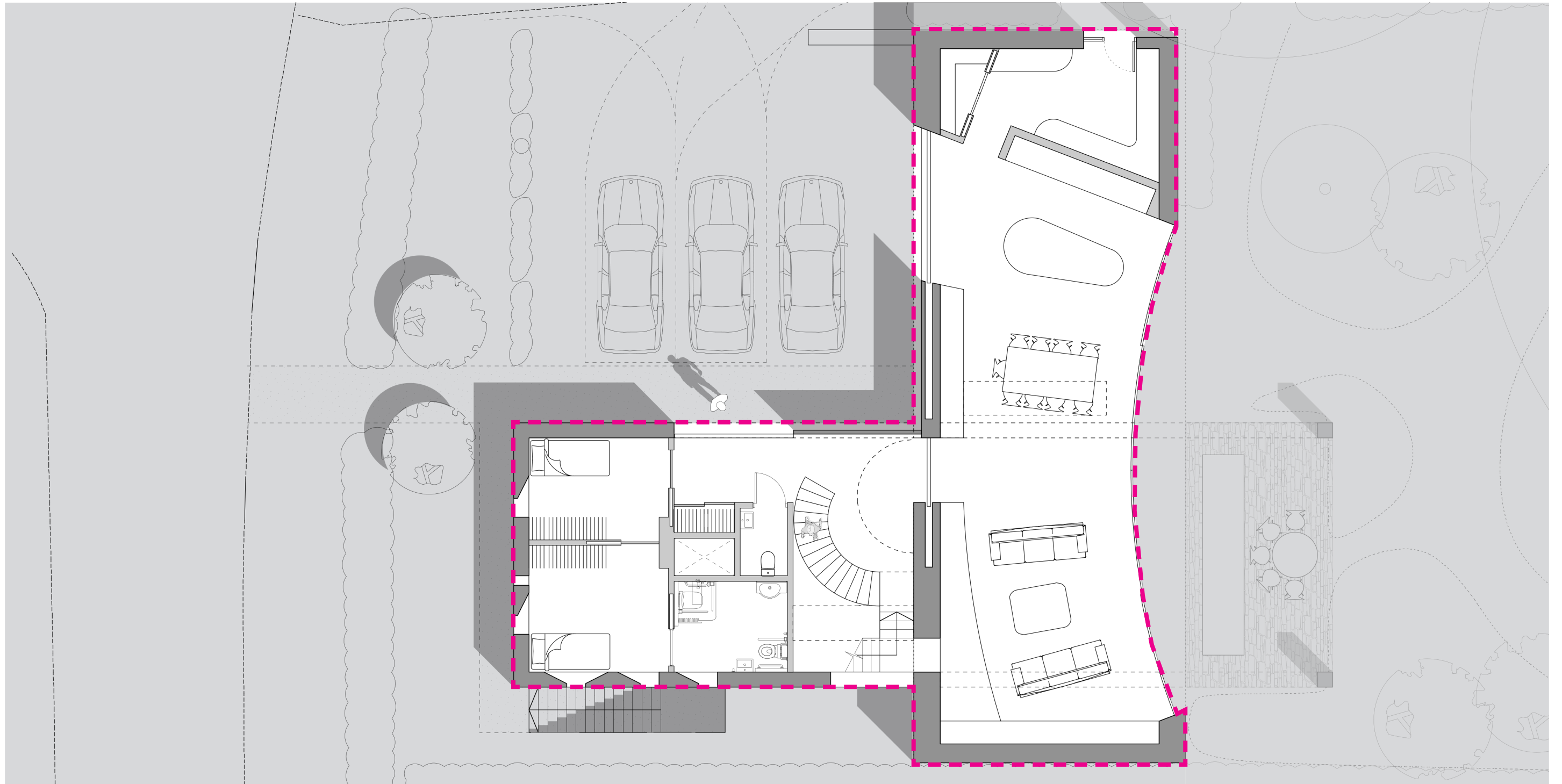




# Bedroom Precedents

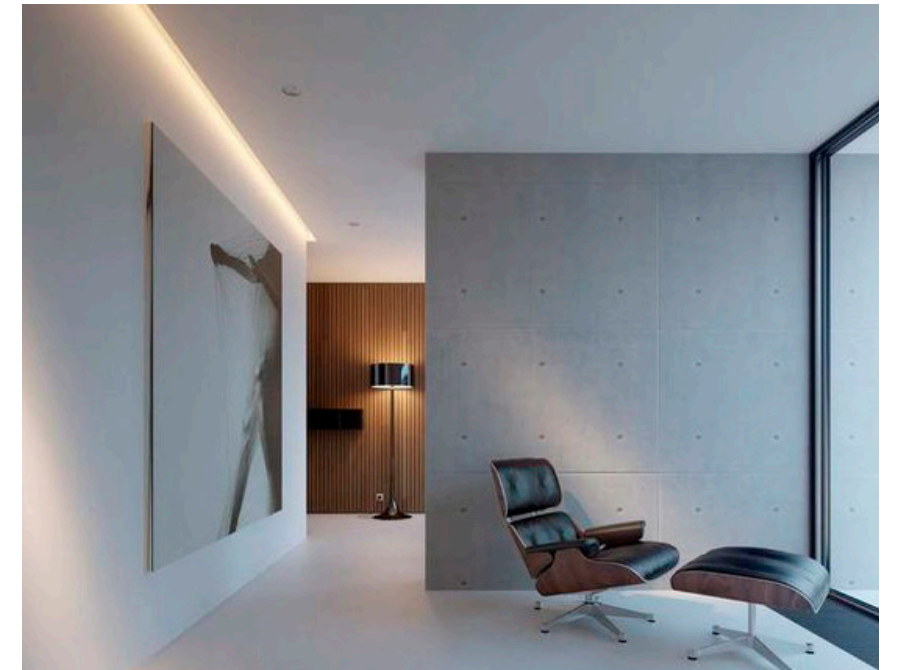
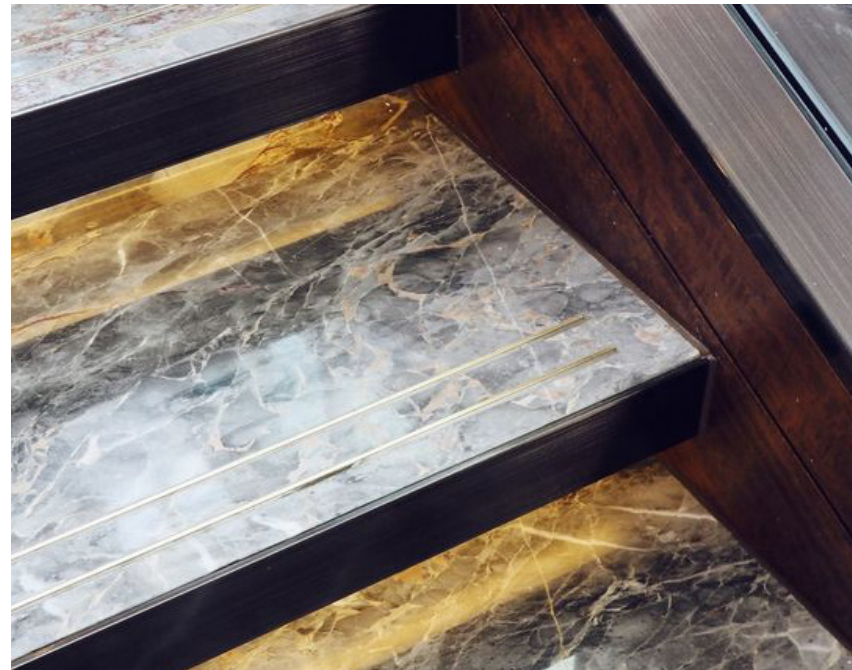


# Interior - Ground Floor Lighting



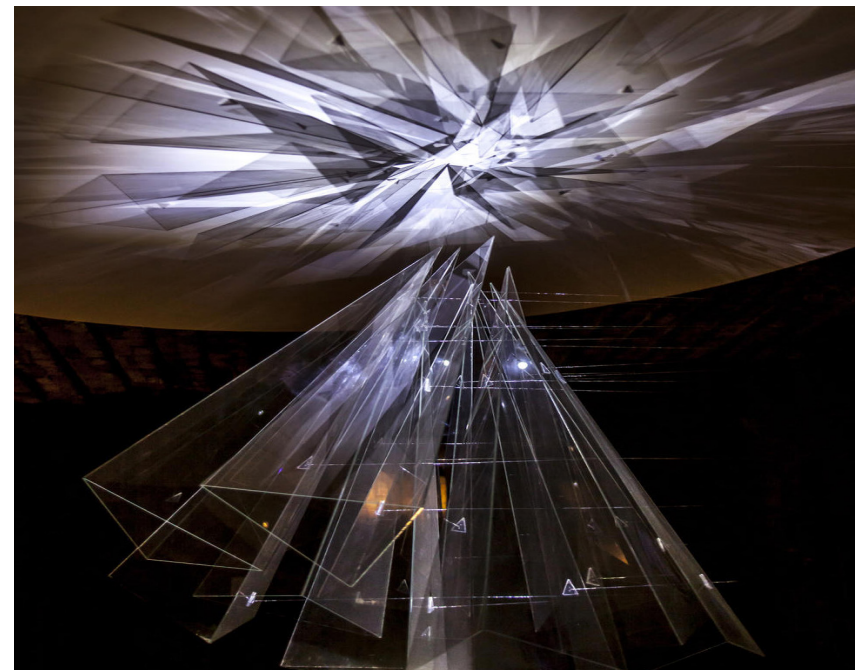
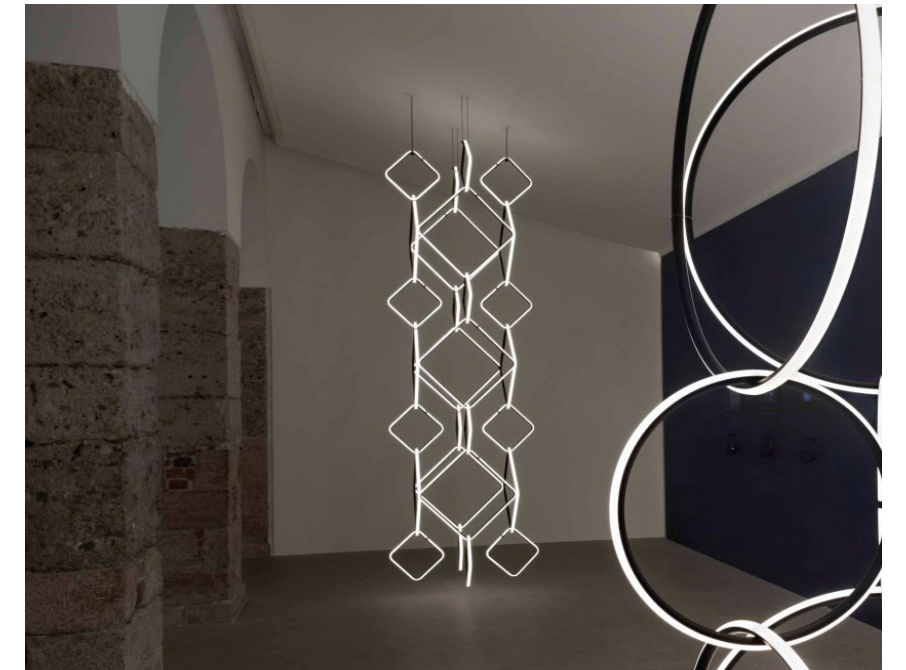
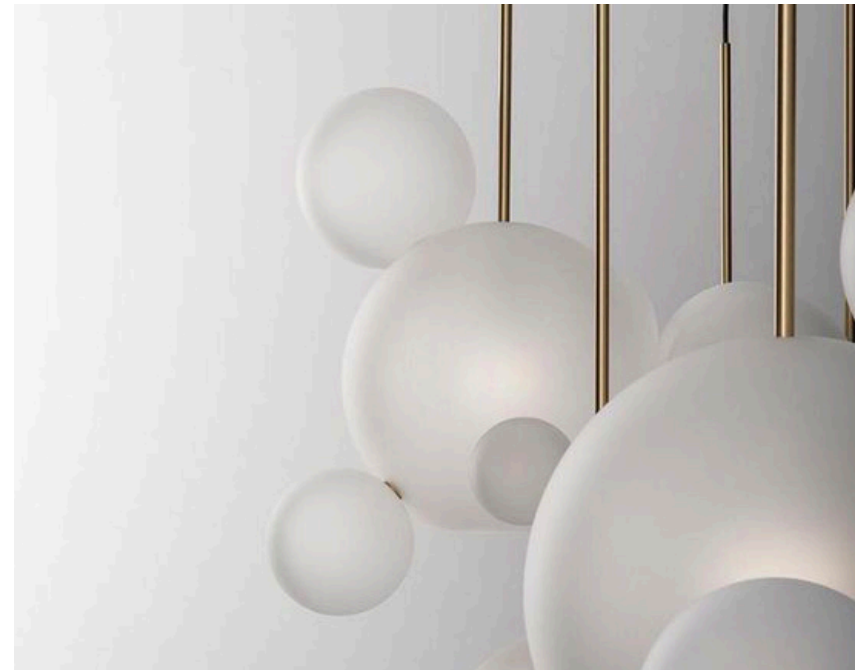


# Stair & Hall Precedents



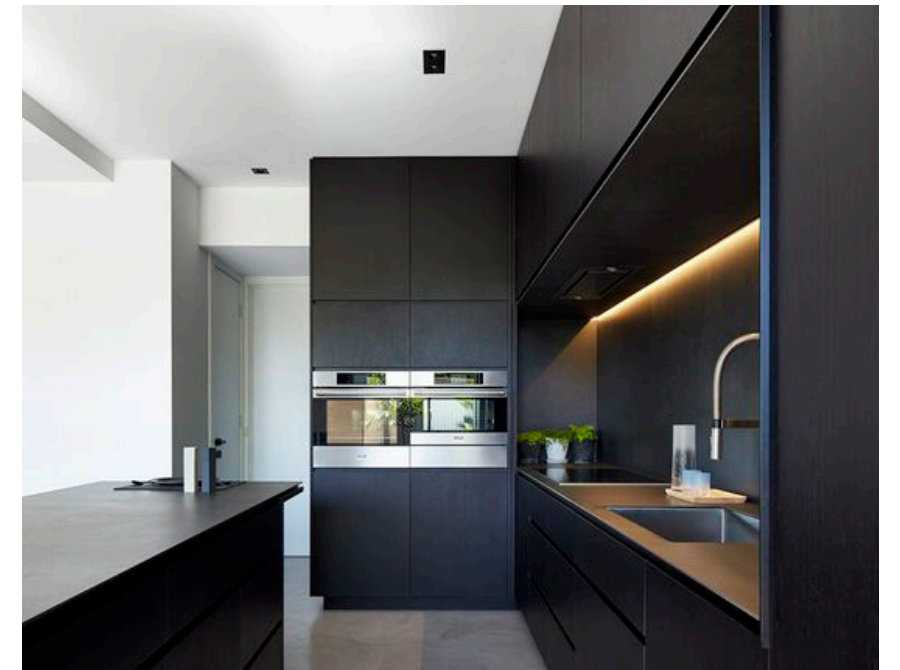


# Hall Pendant Precedents





# Kitchen Precedents





# Dining Precedents



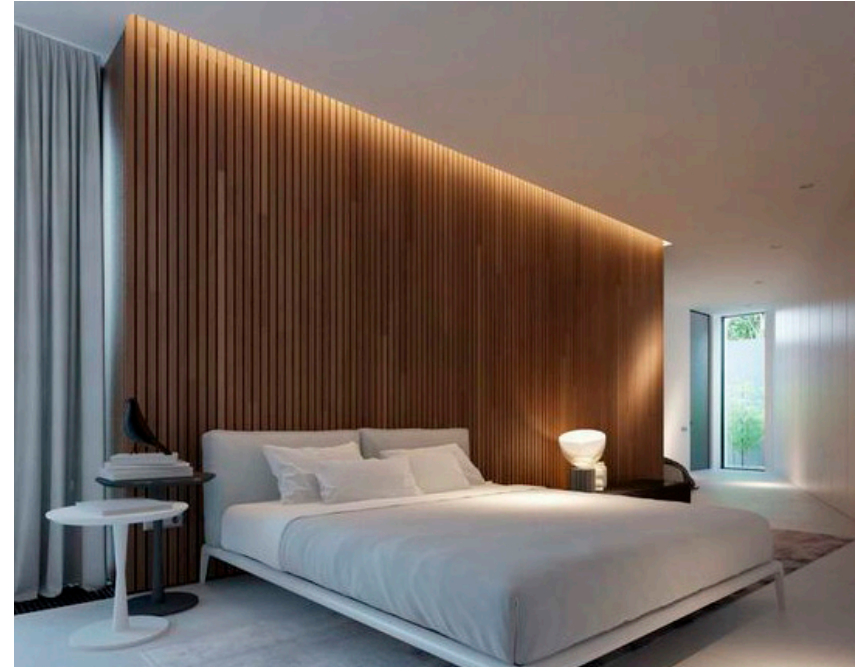


# Living Room Precedents



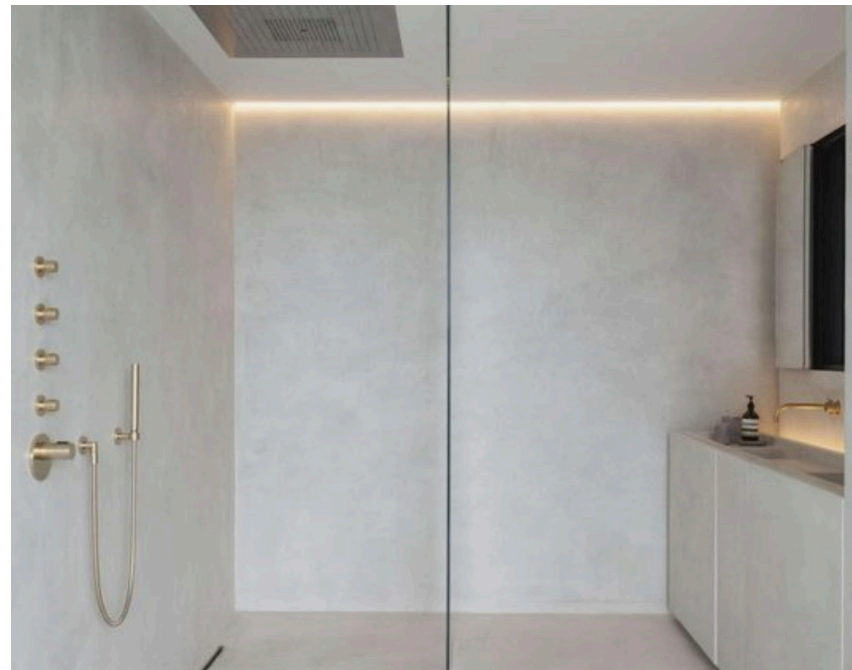


# Bedroom Precedents



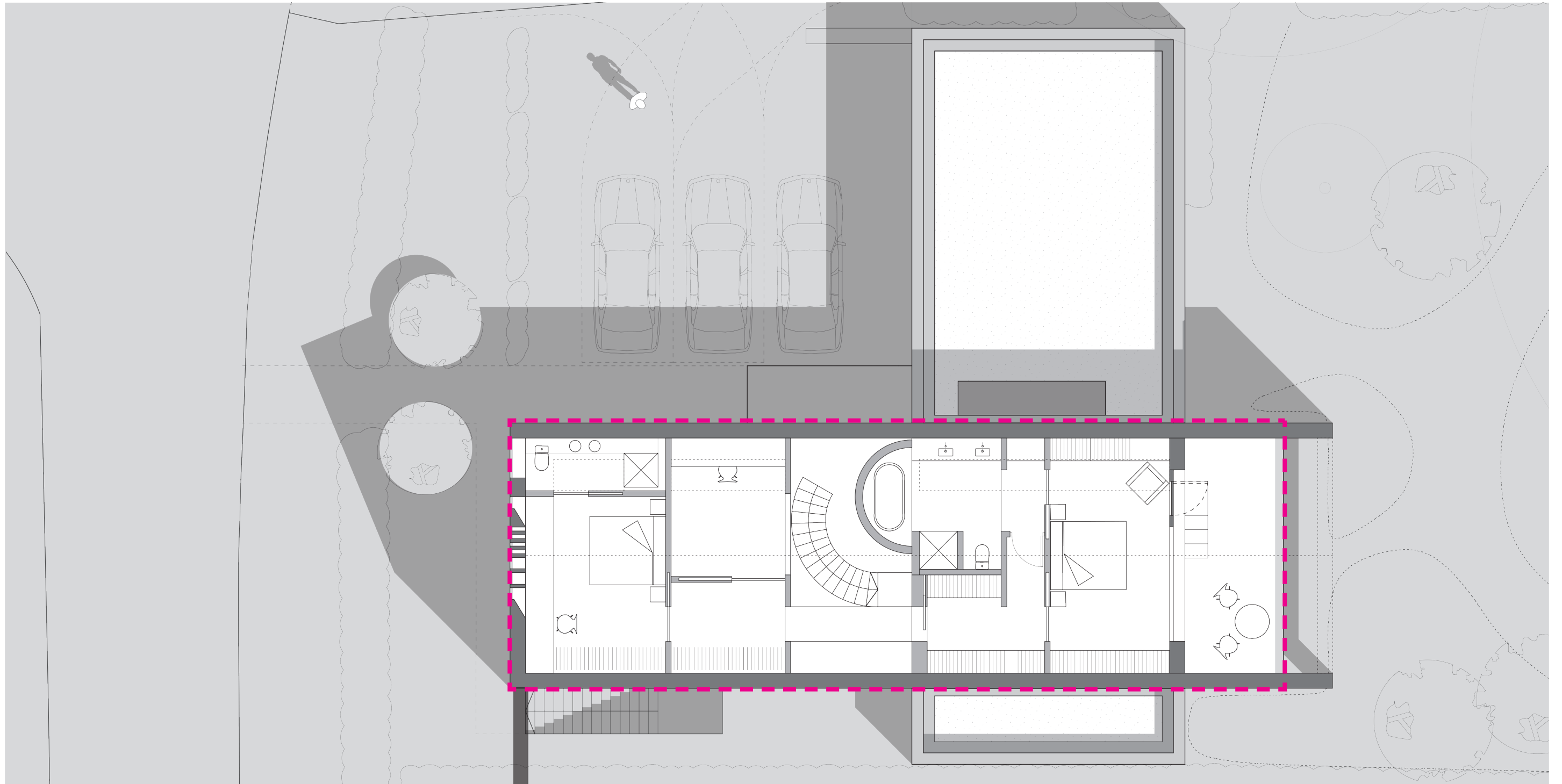


# Bathroom Precedents



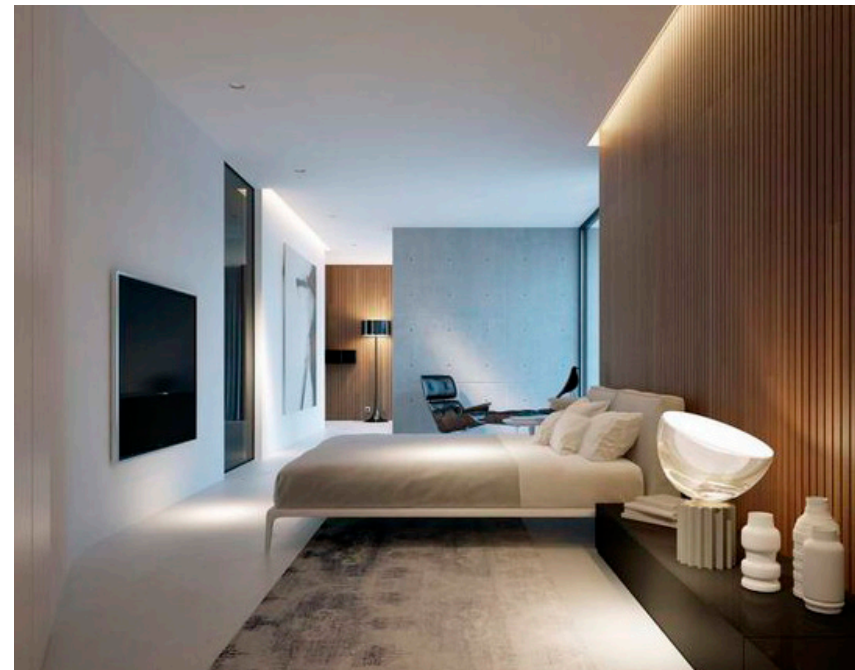


# Interior - First Floor Lighting





# Master Bedroom Precedents



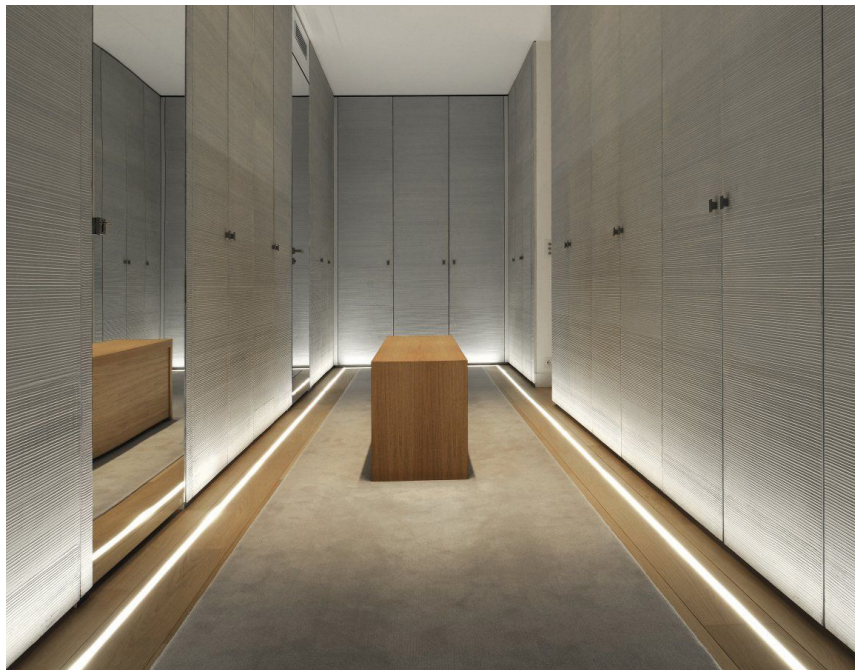


# Ensuite Precedents





# Walk-In Wardrobe Precedents





# Study Precedents







THANK YOU

michaelgrubbstudio.com  
info@michaelgrubbstudio.com  
+44 1202 511 005